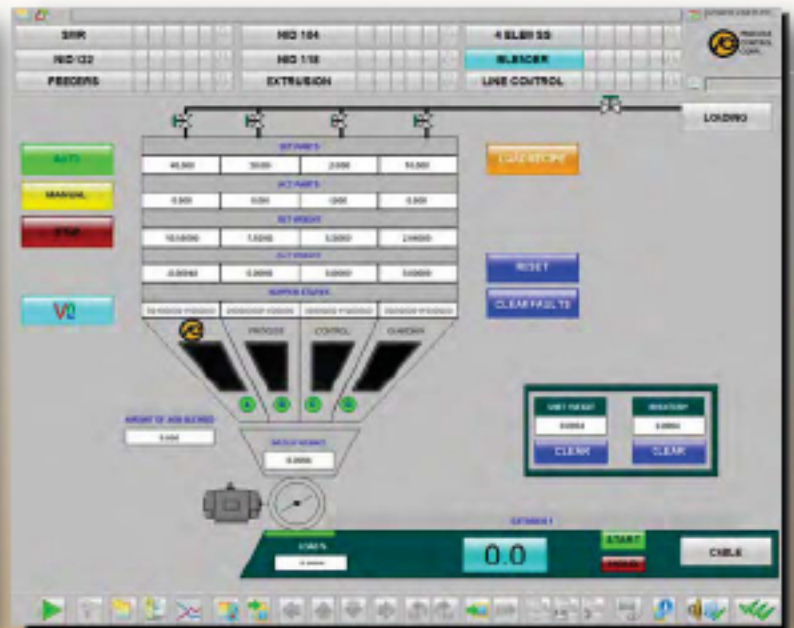
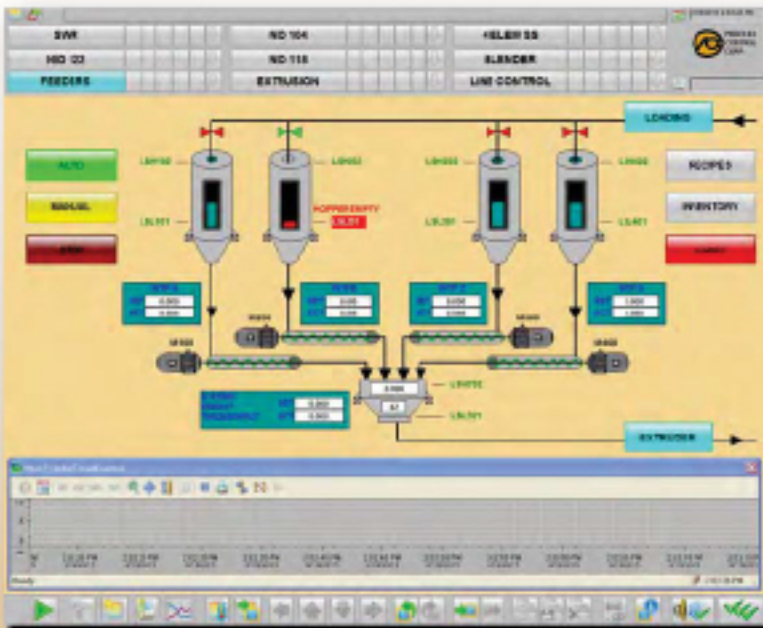


# PROCESS MANAGER

## Total integration services



### With Siemens WinCC, Wonderware, and GE Cimplicity

- Integration by PCC means no third party integrators necessary

- Complete SCADA/DCS solutions from scratch  
OR add on to your existing solutions

- Monitor fully integrated systems from a centralized location

- Connectivity with your protocols: Modbus RTU and Modbus IP, Allen-Bradley E/IP and CIP, Profibus DP, Profinet



**PROCESS CONTROL CORPORATION**

WWW.PROCESS-CONTROL.COM    PROCESS CONTROL GmbH  
 sales@process-control.com    Industriestrasse 15  
 8875 Mimms Drive    83833 Birstein, Deutschland  
 Atlanta GA 30340    www.processcontrol-gmbh.de

OVER 45 YEARS IN BUSINESS



SCRAP RECYCLING



MATERIAL HANDLING



CONTINUOUS BLENDERS



POWDER FEEDERS



EXTRUSION CONTROL



BATCH BLENDERS