

HDA Series

Dryer Hopper



The HDA Series Dryer Hopper from Process Control provides processors with an accurate, energy efficient means of drying hygroscopic materials.

The HDA Series Dryer Hopper from Process Control Corporation is engineered to efficiently and effectively dry hygroscopic materials. The dryer hopper is a critical component in resin drying systems, affecting both drying performance and energy efficiency. Poor hopper performance can result in wasted energy and incomplete drying of the material.

To sufficiently dry hygroscopic materials, every initially moist pellet must be subjected to a prescribed temperature and dewpoint atmosphere for a fixed time. This environment removes the moisture from the material, lowering it to a level

suitable for processing.

The design goal for the HDA Series was to develop a dryer hopper that would maximize performance while minimizing energy usage. The result of our extensive R&D program is a superior dryer hopper that provides a symmetrical temperature profile throughout the bed and balanced flow of material through the hopper.

With common hopper designs, process air flows of 1.0 cfm/pound per hour are typically utilized in an attempt to compensate for hopper design inefficiencies. This results in higher horsepower blowers, larger

heater boxes and wasted energy. The HDA Series Dryer Hopper is designed to effectively dry hygroscopic materials using only 0.6 cfm/pound per hour. This results in an immediate energy savings of 35% without compromising drying performance. The key to the HDA design is a special air dispersion and material flow control system that facilitates the optimum heat-transfer to material-flow relationship. This ensures that each pellet remains at the optimum drying temperature for the required residence time.

The HDA Dryer Hopper can be machine mounted with a spoolpiece mounting adaptor, mezzanine mounted or floor mounted on a support stand with a vacuum take-away box. ■

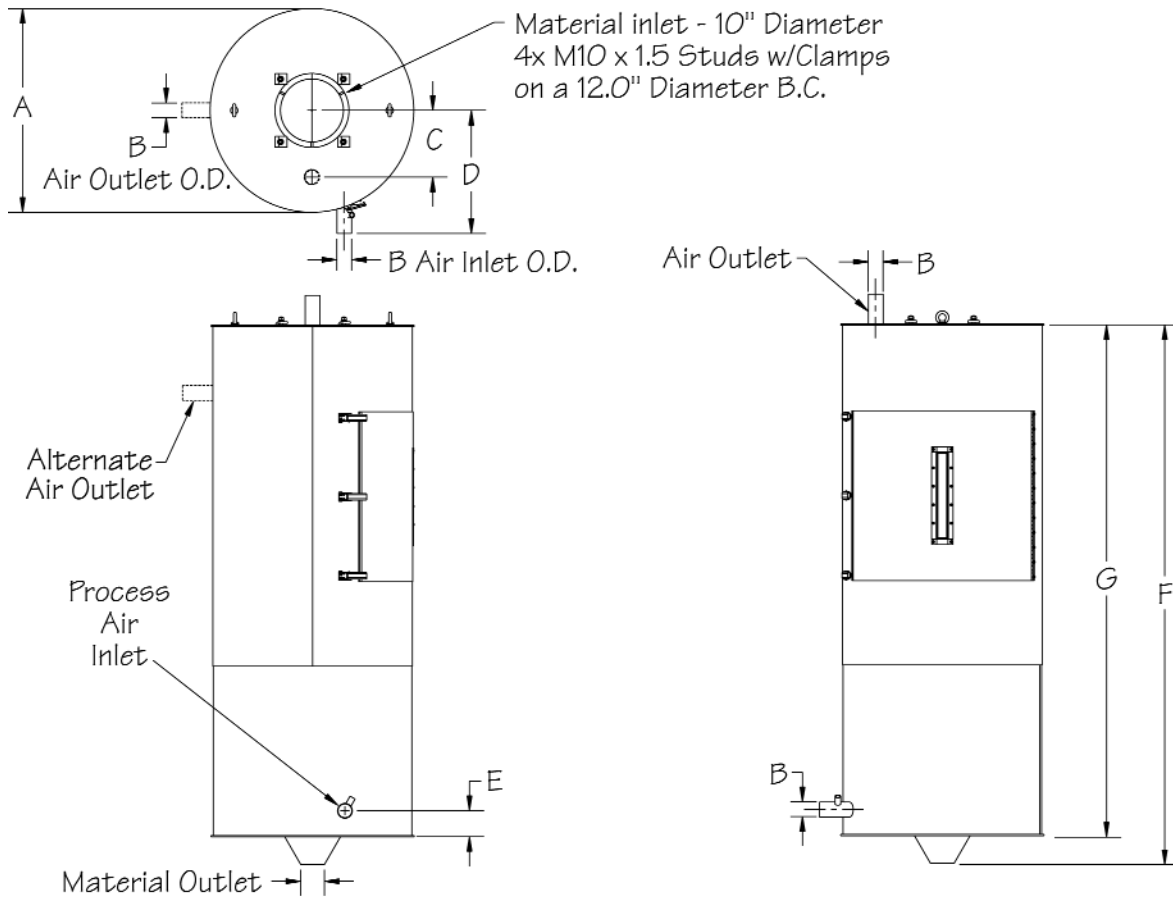
Standard Features

- Hinged clean out door with sight glass
- Inlet flange for mounting PCC vacuum receiver
- 60° cone
- Fiberglass insulation
- Drain spout with cap
- Exterior polished stainless steel finish

Options

- Stand with vacuum pick-up box for floor mounting
- Low level and load level sensors
- Spool piece for mounting directly to processing machine
- 70° Cone for flake/regrind materials

HDA Series Dryer Hopper



Every unit is factory tested before shipment. Information is subject to change without notice. Use only certified drawings for construction purposes.

SPECIFICATIONS for HDA SERIES DRYER HOPPER

Model Number	Usable Volume cu.ft.	Dimensions (inches)							Ship Weight lbs.
		A	B	C	D	E	F	G	
HDA080	23	35.0	4.0	9.8	20.5	3.0	105.0	94.3	1500
HDA140	40	39.0		12.0	23.0	4.4	124.5	113.6	2000
HDA210	60	41.5	5.0	15.0	25.0	6.4	140.9	130.3	2500
HDA320	91	52.0		16.0	29.0	4.9	153.0	138.6	3000
HDA480	137	58.0	7.0		32.0	10.3	164.6	142.1	3500
HDA600	171	61.0		34.0	11.3	171.6	158.0	4000	
HDA875	250	69.5	20.0	32.0	10.1	214.4	203.5	4500	
HDAV50	500	For detailed specifications on this model, contact PCC.							6250



PROCESS CONTROL Corporation
World Headquarters
 6875 Mimms Drive, Atlanta, GA 30340 USA
 Tel: (770) 449-8810 Fax: (770) 449-5445
 www.process-control.com

PROCESS CONTROL GmbH
 Industriestrasse 15, 63633 Birstein, Deutschland
 Tel: (+49) 0 60 54-91 29 0 Fax: (+49) 0 60 54-91 29 99
 E-Mail: ProcessControl@t-online.de