

IN Series

Trim Removal Inducers



The IN Series: trim removal component for use with asr® systems to recycle edge trim, roll scrap and loose scrap individually or simultaneously (pictured above is an IN415N9N)

Process Control's IN Series Inducers are designed to pick up and convey edge and/or bleed trims generated in the production of plastic film or other thin-gauge products such as foam, tape, paper or foil. These continuous trims are picked up by suction, conveyed into the inducer's venturi section and blown to a destination such as a Process Control film grinder or a waste container.

Process Control inducer manifolds are designed to insure that the air velocity at the pickup point is maintained so that trims do not wrap

around the cutters.

The IN Series inducers feature an adjustable venturi to allow you to tune the inducer for peak performance with your installation.

IN Series inducers have a higher induced air to primary air ratio than conventional trim removal systems, providing excellent pickup and conveying performance.

IN Series inducers are designed to adapt easily to the installation requirements of your extrusion lines. The unit is shipped with its fan in a

top-horizontal arrangement, but can be easily rotated in 90° increments to provide the required fan/venturi orientation. The fan may also be mounted remotely from the venturi using additional tubing. ■

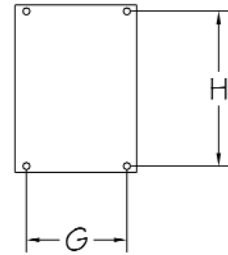
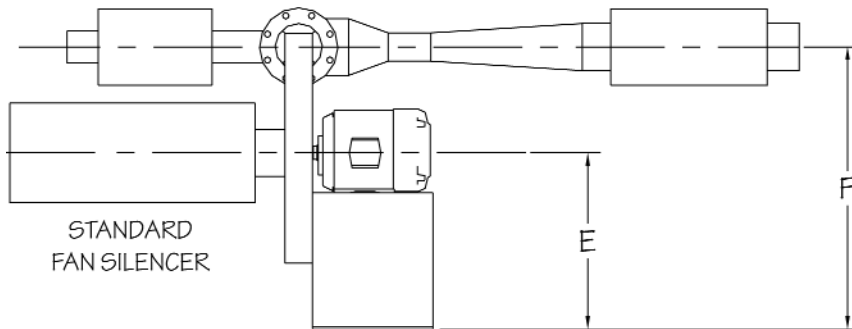
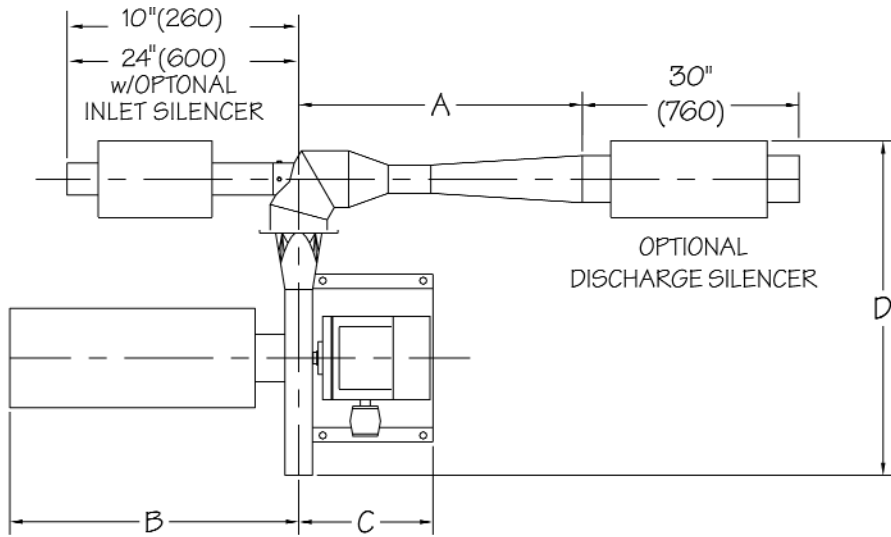
Standard Features

- 5 - 20 HP AC, TEFC motors
- Power Requirements: 460/3PH/60hz
- Electricals: Starter and controls are normally included in a PCC Grinder control panel when purchased as part of a complete asr® (Automatic Scrap Recycling system), or can be supplied in a separate stand-alone panel.
- Silencer on the fan inlet
- Mild steel construction
- High gloss enamel paint in PCC standard color

Options

- Interconnecting tubing and hardware
- Venturi inlet bell-mouth
- Edge and/or bleed trim pickup manifolds
- Silencers on the venturi inlet and outlet
- AEN air eliminator to separate conveying air from trims
- Special electricals
- Special paint

IN Series Trim Removal Inducers



MOUNTING PLATE

Specifications

MODEL	Motor HP (kW)	Dimensions - Inches (mm)								Inlet size Inches(mm)	Outlet size Inches (mm)
		A	B	C	D	E	F	G	H		
IN405	5 (3.7)	44 (1115)	25 (635)	16 (400)	35 (885)	16 (400)	26 (660)	7.0 (178)	14.0 (356)	4.0 (102)	6.63 (168)
IN415	15 (11)	55 (1400)	48 (1215)	25 (620)	50 (1270)	26 (660)	44 (1115)	19.5 (495)	21.8 (552)		8.0 (203)
IN420	20 (15)										



PROCESS CONTROL Corporation
World Headquarters
 6875 Mimms Drive, Atlanta, GA 30340 USA
 Tel: (770) 449-8810 Fax: (770) 449-5445
 www.process-control.com

PROCESS CONTROL GmbH
 Industriestrasse 15, 63633 Birstein, Deutschland
 Tel: (+49) 0 60 54-91 29 0 Fax: (+49) 0 60 54-91 29 99
 E-Mail: ProcessControl@t-online.de