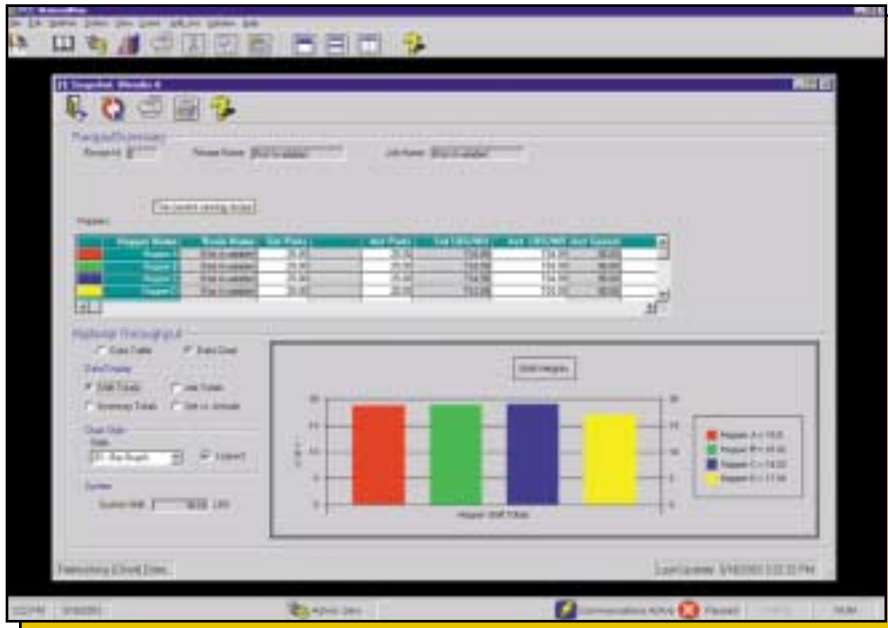


Material Manager

Material Usage and Tracking System



Material Manager. a versatile data collection tool that analyzes the material usage of a blender system over a period of time.

Material Manager: A Material Usage and Tracking Tool

In association with Process Control's Trend Manager, Material Manager is a data collection tool that analyzes the material usage of a blending system over time.

As a data collection tool, Material Manager can accurately track the material usage of each component on a blender used on a production line. Tracking material usage allows the system to report on how much and which type of material was used on each job, shift, blender, and recipe. This system of recording material usage will provide processors with a better understanding of the costs incurred in processing an order.

Using a Microsoft Windows-based PC and remote communication capabilities of Process Control equipment, Material Manager can collect and store important material

throughput data. Communication is established with the mini-op controller using a serial or Ethernet port connection with the aid of a OPC/DDE server package residing in the PC. Process Control can provide the EPCCSERV DDE server package if one is not already available. All communication protocols supported by the mini-op controller are also supported by the Material Manager.

Material Manager continuously collects data and stores the information on the PC hard disk. The amount of information maintained in the database is limited only to the size of the hard disk. As the database expands, old records can be exported to a file to import later or be completely purged from the system. Material throughput reports can be broken down by job, recipe, blender, shift, and resin usage. Additionally, these reports can run on any time interval contained in the database. Automat-

ic reports sent to a printer or file can be scheduled to record at specific intervals or frequencies. Or, in the case of shift reports, after a shift change. Finally, data can be exported to a common separate file to be imported into spreadsheets or other applications.

The adaptability of Material Manager automation software can further assist you in tracking and improving your production's performance to ensure you are getting the most out of your blending systems. ■

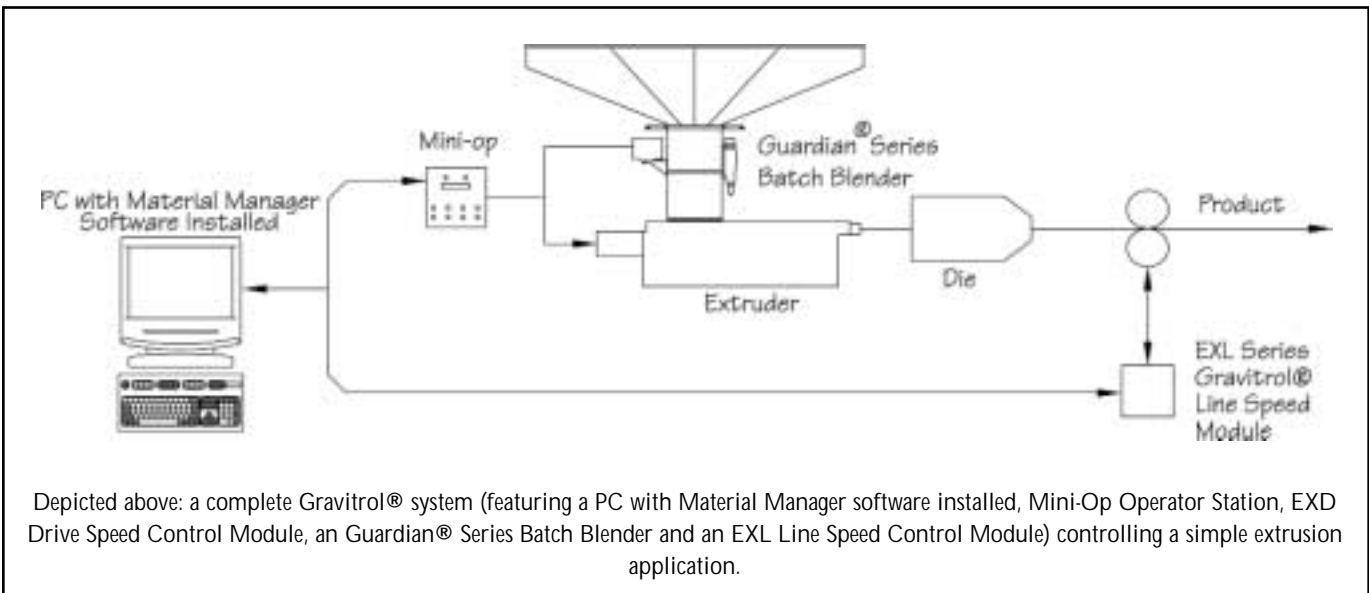
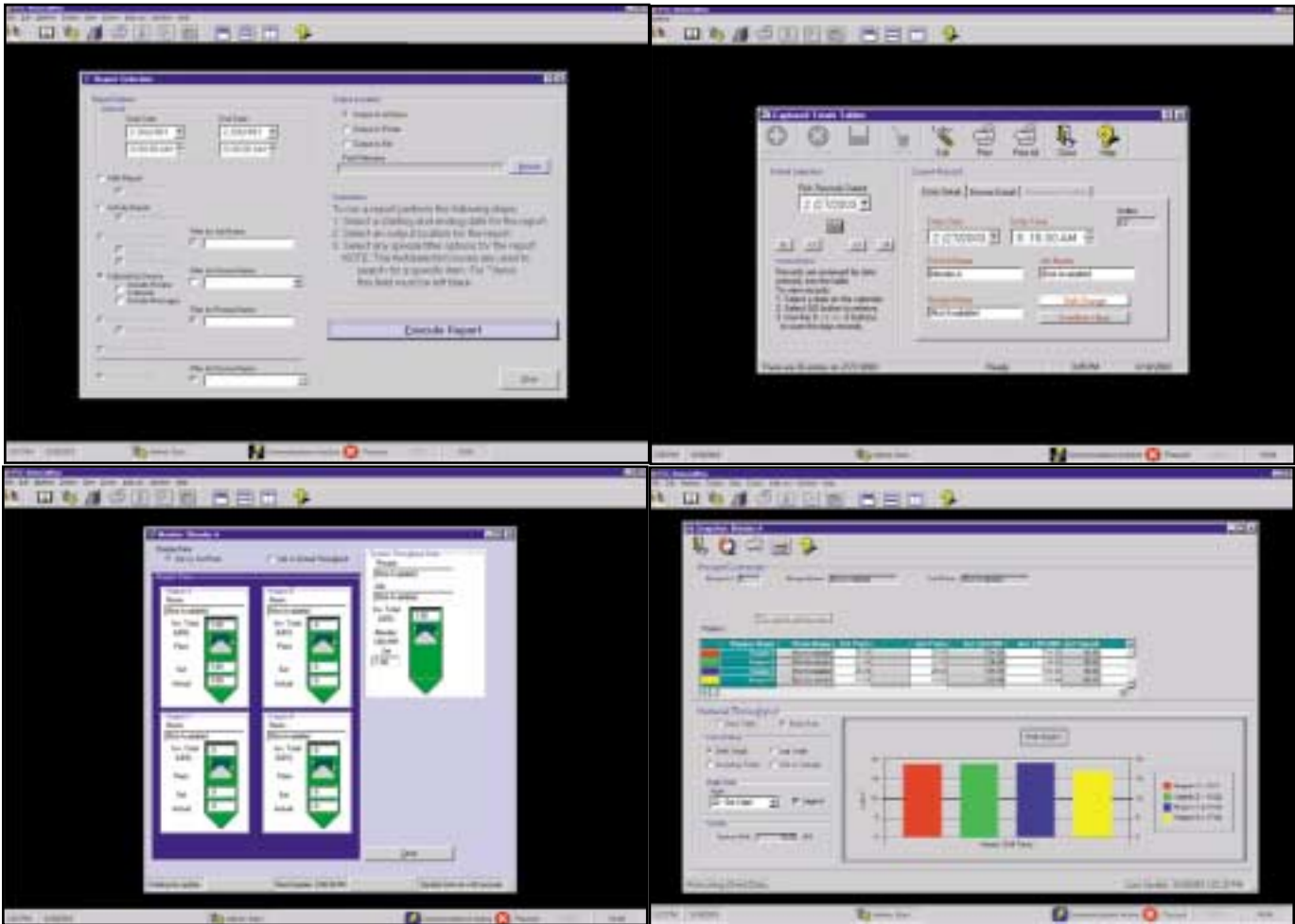
Standard Features

- Works with any OPC/DDE server which supports the remote protocols of the mini-ops.
- Quick installation on any Windows-based PC/Laptop.
- Data can be logged to any hard drive.
- Report generation showing shift, job, blender, raw material, and recipe totals.
- Automatic report generation to a file or printer.
- Can support up to 12 continuous or batch blenders.

Minimum Requirements

- Windows based PC with at least 15 meg of free space.
- CD-ROM and 3.5 Floppy disk drives for licensing and installation.
- Available serial communication port.

Material Manager Material Usage and Tracking System



Depicted above: a complete Gravitol® system (featuring a PC with Material Manager software installed, Mini-Op Operator Station, EXD Drive Speed Control Module, an Guardian® Series Batch Blender and an EXL Line Speed Control Module) controlling a simple extrusion application.



PROCESS CONTROL Corporation
World Headquarters
 6875 Mimms Drive, Atlanta, GA 30340 USA
 Tel: (770) 449-8810 Fax: (770) 449-5445
 www.process-control.com

PROCESS CONTROL GmbH
 Industriestrasse 15, 63633 Birstein, Deutschland
 Tel: (+49) 0 60 54-91 29 0 Fax: (+49) 0 60 54-91 29 99
 E-Mail: ProcessControl@t-online.de