

# VB Series

## Vacuum Power Unit



***The VB Series: designed for low to moderate rate conveying of pellets and regrinds (pictured is a VB02).***

Process Control specializes in equipment for bulk conveying of plastic materials. Our conveying equipment is designed to stand up to the demands of your application.

To prevent bottle-necking and ensure a continuous supply to the material's destination, Process Control engineers work with you to select the best equipment and integrate it into a reliable system capable of continuous operation and guaranteed performance.

The VB Series from Process Control is designed for low to moderate rate conveying and quiet, low-mainte-

nance performance. As part of an integrated material handling system, the VB Series can improve the efficiency of your plastics processing. ■

### Standard Features

- 2.4 to 8.4 HP available
- Quiet ring compressor design
- T-frame TEFC Motor (indoor or outdoor)
- Enclosed, V-belt drive
- Dual-stage intake filter
- Discharge silencer
- Vacuum relief valve and gauge
- Power: 460V/3PH/60HZ

- Control Voltage: 24VDC or 115VAC

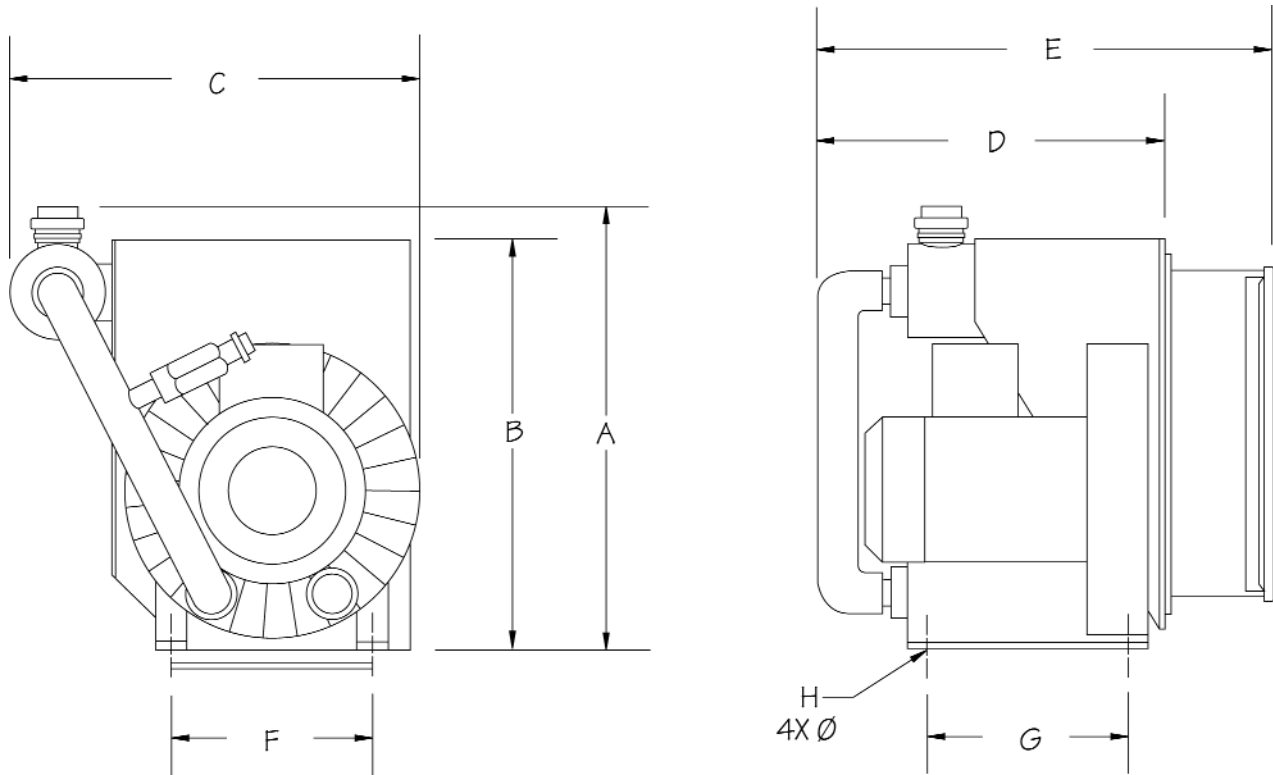
### Options

- Special Paint
- Special Voltage
- Continuous Run Valve to Reduce Pump Cycling

### For Your Material Handling Applications, PCC Also Offers:

- Central Vacuum Pumps - VE and VF Series
- Vacuum Receivers - RN Series for Pellets. RP Series for Regrinds and/or Powder Materials
- Sequencing Control Panels - Director Series
- Central Dust Collector - RDJ Series
- Interconnecting Tubing and Hardware
- Surge Bins and Silos
- Tilt Tables
- Railcar Unloading Systems
- Mechanical Installation

# VB Series Vacuum Power Unit



Every unit is factory tested before shipment. Information is subject to change without notice.  
Use only certified drawings for construction purposes

## Specifications for VB Series Vacuum Power Unit

Model Number	HP (kw)	Tube Size in.(mm)	Dimensions - Inches (mm)								Shipping Weight lbs. (kg)
			A	B	C	D	E	F	G	H	
VB02	2.4 (1.8)	2.0 (51)	21.8 (554)	19.3 (490)	22.7 (577)	16.8 (427)	24.2 (615)	11.61 (295)	4.26 (108)	.551 (14)	100 (45)
VB04	4.6 (3.5)	2.5 (64)	23.9 (607)	21.8 (554)	23.3 (592)	18.0 (457)	25.4 (645)	11.42 (290)	5.51 (140)	.591 (15)	150 (54)
VB08	8.4 (6.3)		38.0 (965)	33.0 (838)	30.2 (767)	24.0 (610)	31.4 (798)	14.37 (365)	11.02 (280)		200 (91)



**PROCESS CONTROL Corporation**  
World Headquarters  
6875 Mimms Drive, Atlanta, GA 30340 USA  
Tel: (770) 449-8810 Fax: (770) 449-5445  
www.process-control.com

**PROCESS CONTROL GmbH**  
Industriestrasse 15, 63633 Birstein, Deutschland  
Tel: (+49) 0 60 54-91 29 0 Fax: (+49) 0 60 54-91 29 99  
E-Mail: ProcessControl@t-online.de