



PROCESS CONTROL

P: 770.449.8810 F: 770.449.5445
6875 Mimms Drive, Atlanta, GA 30340
www.process-control.com

FOR IMMEDIATE RELEASE

MARCH 2012



Process Control Corporation will be exhibiting at the International Plastics Showcase, April 1-5, 2012 in Booth 2051. We will be featuring touch screen controls for our full line-up of gravimetric blenders, the new brushless package for continuous blenders, and the brand new 1kg Guardian® Series 2 gravimetric batch blender. Please come out and support us!

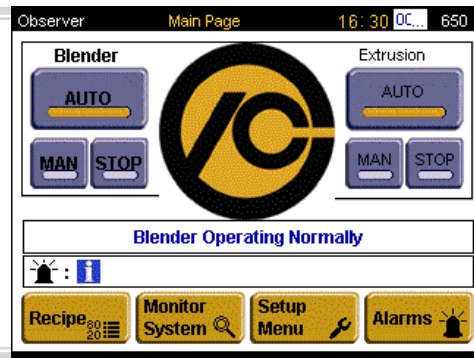
1KG GUARDIAN® SERIES 2 BATCH BLENDER

The final addition to the Guardian® Series 2 family is the 1kg blender. The product of cutting edge design and engineering, this blender features incredibly easy clean-out and material changes, superior accuracy, and is available with up to 4 elements and up to 350 PPH.



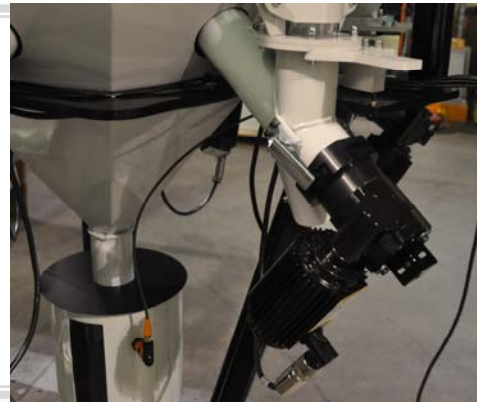
TOUCH SCREEN CONTROLS

Touch screen controls are now standard for all of the new Guardian® Series 2 Batch Blenders and Continuous Blenders. Touch Screen upgrades are also available for older Guardian®, Autobatch and Continuous Blenders.



BRUSHLESS FOR CONTINUOUS BLENDERS

PCC offers a completely new drive/gearmotor package for its auger based, continuous loss-in-weight feeders and blenders. The new gearmotors are both brushless and encoderless, for far superior reliability, performance and a longer life span, as compared to the previous versions. Also available as an upgrade for older systems





PROCESS CONTROL

P: 770.449.8810 F: 770.449.5445
6875 Mimms Drive, Atlanta, GA 30340
www.process-control.com

Click the banner to receive a FREE EXPO PASS compliments of PCC!



IPAD 2 GIVEAWAY

Process Control will also be giving away the THREE iPad 2 Tablets from the booth during the run of NPE. At the end of the each day, one winner will be randomly selected from the inquiry list from that day. The winner will be notified via email that evening and have their new iPad 2 shipped to them once the conference is over!



iPad2 Copyright © 2012 Apple

12KG GUARDIAN® SERIES 2 BLENDER

Process Control has completed the next member of the Guardian® Series 2 family – the 12kg model gravimetric batch blender. This model also introduces the brand new see-through mixing chamber door that allows for an unobstructed view of material in the mixing chamber. This model is the final product in our standard series of gravimetric batch blenders.



Established in 1967, PCC has an unending commitment to the design and engineering of advanced auxiliary machinery for the plastics processing industry. Our goal is to provide the most accurate equipment and exceptional customer service. We revolutionized processing with development of Automatic Scrap Recycling for in-line processing of film scrap and the first continuous gravimetric blending system. Process Control continues to lead the industry with advanced design and innovative solutions for the global marketplace.

Please visit our website at www.process-control.com.
For more information, contact:
Dana Darley, General Manager: ddarley@process-control.com