

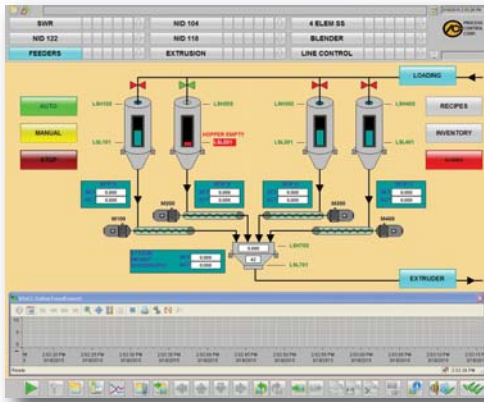


P: 770.449.8810 F: 770.449.5445  
6875 Mimms Drive, Atlanta, GA 30340  
www.process-control.com

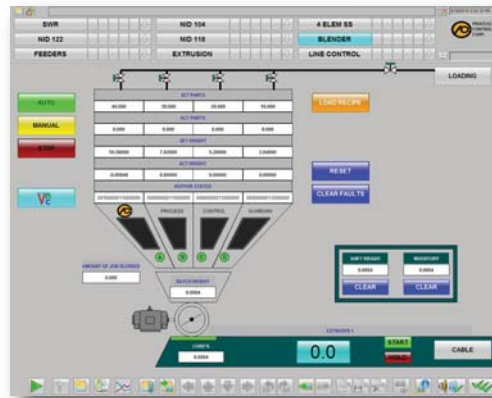
**FOR IMMEDIATE RELEASE**

**APRIL 2017**

## Process Manager



Example: Continuous Screen



Example: Batch Screen

### Process Visualization Software Package:

Monitor/Control Real Time Blender Operations, Historical Trending, Material Consumption, and Alarm Logging

- Siemens Win CC, Wonderware, and GE Cimplicity
- Integration by PCC means no third party integrators necessary
- Completely new SCADA/DCS or add on to your existing solutions
- Connectivity with your protocols: Modbus RTU and Modbus IP, Allen-Bradley E/IP CIP, and Profibus DP, Profinet

---

Established in 1967, Process Control Corporation has an unending commitment to the design and engineering of advanced auxiliary machinery for the plastics processing industry. Our goal is to provide the most accurate equipment and exceptional customer service. We revolutionized processing with development of Automatic Scrap Recycling for in-line processing of film scrap and the first continuous gravimetric blending system. Process Control continues to lead the industry with advanced design and innovative solutions for the global marketplace. Please visit our website at [www.process-control.com](http://www.process-control.com).